

932
4

Stuttgarter Beiträge zur Naturkunde

Serie A (Biologie)

Herausgeber:

Staatliches Museum für Naturkunde, Rosenstein 1, D-7000 Stuttgart 1

Stuttgarter Beitr. Naturk.	Ser. A	Nr. 485	36 S.	Stuttgart, 1. 12. 1992
----------------------------	--------	---------	-------	------------------------

Chrysomelidae from the Nepal Himalayas, III*) (Insecta: Coleoptera)

By Lev N. Medvedev, Moscow

With 22 figures

Summary

Further Chrysomelid materials from Nepal contain 156 species, among which 1 genus and 16 species are new to science: *Nodina dhadinga* n. sp., *Nodina martensi* n. sp., *Basilepta schawalleri* n. sp., *Basilepta laeta* n. sp. (Eumolpinae), *Apophyllia schawalleri* n. sp., *Cneorane minuta* n. sp., *Calomicrus brunneus* n. sp., *Monolepta martensi* n. sp., *Nepalolepta carinata* n. gen. n. sp. (Galerucinae), *Hespera nigriceps* n. sp., *Hespera dasytoides* n. sp., *Aphthona ovatipennis* n. sp., *Lipromorpha aptera* n. sp., *Manobia violaceipennis* n. sp., *Manobidia atra* n. sp., *Zipangia aptera* n. sp. (Alticinae). The genera *Mandarella* and *Stenoluperus* are transferred from the Galerucinae to Alticinae. The genus *Anastena* is synonymized with the genus *Arthrotus*.

Zusammenfassung

Aus einer Aufsammlung von Chrysomelidae aus Nepal werden 156 Arten behandelt, darunter 1 neue Gattung und 16 neue Arten (siehe „Summary“).

Contents

1. Introduction	2
2. Acknowledgements and collectors	2
3. Subfamily Criocerinae	2
4. Subfamily Clytrinae	3
5. Subfamily Chlamisinae	3
6. Subfamily Cryptocephalinae	3
7. Subfamily Eumolpinae	5
8. Subfamily Chrysomelinae	11
9. Subfamily Galerucinae (<i>Nepalolepta</i> n. gen. p. 17)	12
10. Subfamily Alticinae	21
11. Subfamily Hispinae	34
12. Subfamily Cassidinae	35
13. Literature	36

*) Results of the Himalaya Expeditions of J. MARTENS, no. 182. — For no. 181 see: Stuttgarter Beitr. Naturk. (A) 483, 1992. — J. M. sponsored by Deutscher Akademischer Austauschdienst and Deutsche Forschungsgemeinschaft.

1. Introduction

The paper deals with the last part of very interesting material of Chrysomelidae collected in Nepal by Prof. Dr. J. MARTENS and Dr. W. SCHAWALLER in 1983–1988. Two previous parts of this material were already published (MEDVEDEV 1984, 1990). In the present article 156 species from Nepal are recorded, including 1 new genus and 16 new species; 2 genera are transferred from the Galerucinae to the Alticinae and some taxonomical changes are proposed. In total the above mentioned collection contains 285 species, including 11 genera and 53 species new for science. Among them at least 8 genera and 26 species, mostly small Alticinae, are soil inhabitants or in any case more or less connected with soil. Doubtless, the special collecting methods used by J. MARTENS and W. SCHAWALLER led to the discovery of this large amount of new taxa.

2. Acknowledgements and collectors

I thank Prof. Dr. J. MARTENS of the Institute for Zoology, University of Mainz and especially Dr. W. SCHAWALLER of the Museum of Natural History in Stuttgart heartily for the opportunity to study the material dealt with. My stay in Stuttgart was kindly supported by the Deutsche Forschungsgemeinschaft. The larger part of the material, including the types, is deposited in the Museum of Natural History in Stuttgart (SMNS); some paratypes and duplicates have been retained in the author's collection (CLMM).

The collectors of the type material are mentioned in the corresponding chapters, concerning the already known species the collectors are:

1969–1974: J. MARTENS;

1980: J. MARTENS & A. AUSOBSKY;

1983: J. MARTENS & W. SCHAWALLER (17. VII.–20. VIII.), J. MARTENS & B. DAAMS (22. VIII.–20. IX.);

1988: J. MARTENS & W. SCHAWALLER.

3. Subfamily Criocerinae

3.1. *Lilioceris atrilateralis* Kimoto & Takizawa 1973

1973 *Lilioceris atrilateralis* Kimoto & Takizawa, Kontyû 41 (2): 171.

Material: Sankhua Sabha Distr., between Pahakhola and Karmarang, 2300–1800 m, open forest, bushes, 4. VI. 88, 1 ex. SMNS. – Sankhua Sabha Distr., Arun Valley between Mure and Hurure, mixed broad-leaved forest, 2050–2150 m, 9.–17. VI. 88, 1 ex. CLMM.

3.2. *Lema rufotestacea* Clark 1888

1866 *Lema rufotestacea* Clark, App. Cat. Phytoph.: 29.

Material: Ilam Distr., between Ilam and Parbate, 1250–1450 m, cultural land, bushes, 13. VIII. 83, 1 ex. SMNS.

Remarks: The species is widely distributed in the tropical continental Asia, but was not registered for Nepal.

3.3. *Lema birmanica* Jacoby 1892

1892 *Lema birmanica* Jacoby, Ann. Mus. civ. Genova 32: 872.

Material: Sankhua Sabha Distr., Arun Valley bottom between Hedangna and Num, 950–1000 m, subtropical forest, 6.–8. VI. 88, 1 ex. SMNS.

Remarks: First record for Nepal, was known from Birma and Indochina.

3.4. *Lema cyanea* Fabricius 1798

1798 *Lema cyanea* Fabricius, Suppl. Ent. Syst.: 92.

Material: Gorkha/Dhading Distr., Buri Gandaki, Jagat to opposite Pangshing, 1300–1650 m, cultural land, 31. VII. 83, 1 ex. SMNS. – Sankhua Sabha Distr., between Pahakhola and Karmarang, 2300–1800 m, open forest, bushes, 4. VI. 88, 1 ex. SMNS. – Sankhua Sabha Distr., between Pahakhola and Karmarang, 1800–1500 m, cultural land, bushes, 4. VI. 88, 1 ex. CLMM.

4. Subfamily Clytrinae

4.1. *Miochira gracilis* Lacordaire 1848

1848 *Miochira gracilis* Lacordaire, Mon. Phyt. 2: 316.

Material: Kathmandu Distr., Sheopuri Mt., 1700–2100 m, degraded forest, bushes, 25. VI. 88, 2 ex. SMNS. – Taplejung Distr., Tada Khola, ascent to Khebang, 1000–1300 m, *Pinus*, 2. IX. 1983, 1 ex. CLMM.

5. Subfamily Chlamisinae

5.1. *Chlamisus indicus* (Jacoby 1901)

1901 *Chlamys indica* Jacoby, Proc. zool. Soc. London: 163.

Material: Taplejung Distr., lower Gansa Khola to Lungthung, open forest, bushes, 1650–1870 m, 18. V. 88, 1 ex. SMNS. – Sankhua Sabha Distr., Arun Valley, Chichila, 1900–2000 m, *Quercus* forest, bushes near village, 18.–20. VI. 88, 3 ex. SMNS, 2 ex. CLMM.

Remarks: For the first time found in Nepal, was known from India.

6. Subfamily Cryptocephalinae

6.1. *Adiscus hauseri* (Weise 1895)

1895 *Dioryctus hauseri* Weise, Dtsch. ent. Z. 1895: 327.

Material: Sankhua Sabha Distr., Arun Valley bottom between Hedangna and Num, 950–1000 m, subtropical forest, 6.–8. VI. 88, 1 ex. SMNS.

Remarks: Was known from Sikkim, the first time found in Nepal.

6.2. *Adiscus nigroplagiatus* (Jacoby 1903)

1903 *Dioryctus nigroplagiatus* Jacoby, Ann. Soc. ent. Belg. 47: 92.

Material: Sankhua Sabha Distr., Arun Valley, Chichila, 1900–2000 m, *Quercus* forest, bushes near village, 18.–20. VI. 88, 1 ex. SMNS.

6.3. *Adiscus* n. sp.

Material: Sankhua Sabha Distr., Arun Valley between Num and Mure, 1600–1900 m, tree-rich cultural land, 8. VI. 88, 1 ex. SMNS.

Remarks: The species will be described in another publication (MEDVEDEV in prep.), based on material from the Basel Museum.

6.4. *Coenobius fulvipes* Baly 1877

1877 *Coenobius fulvipes* Baly, Trans. ent. Soc. London: 213.

Material: Dhading Distr., Ankhu Khola Tal, Ankhu Sangu, 650 m, cultural land, 24.–25. VII. 83, 1 ex. SMNS.

Remarks: First record for Nepal, was described from India on a single immature specimen. It is possible that *C. lateralis* Weise 1903 and *C. fulvicornis* Jacoby 1908 are synonyms of *C. fulvipes* Baly 1877.

6.5. *Coenobius manipurensis* Jacoby 1908

1908 *Coenobius manipurensis* Jacoby, Fauna Brit. India: 184.

Material: Gorkha Distr., Buri Gandaki, Labubesi-Gorlabesi, 900–1000 m, broad-leaved forest, 29. VII. 83, 1 ex. SMNS. – Gorkha/Dhading Distr., Buri Gandaki, Jagat to Pangshing, 1300–1650 m, cultural land, 31. VII. 83, 3 ex. SMNS, 2 ex. CLMM. – Gorkha Distr., Darondi Khola under Barpak, 1800–1500 m, cultural land, 12. VIII. 83, 1 ex. SMNS.

Remarks: First record for Nepal, was known from India.

6.6. *Cryptocephalus triangularis* Hope 1831

1831 *Cryptocephalus triangularis* Hope in GRAY, Zool. Misc.: 30.

Material: Taplejung Distr., Yamputhin, ascent to pass Deorali, 2100–2600 m, cultural land, bushes, 16. V. 88, 1 ex. SMNS. – Taplejung Distr., upper Tamur Valley, from Lungthung/waterfall to bamboo bridge, 1800–2150 m, open forest, bushes, 19. V. 88, 1 ex. CLMM. – Sankhua Sabha Distr., Arun Valley between Num and Mure, 1600–1900 m, tree-rich cultural land, 8. VI. 88, 1 ex. SMNS.

6.7. *Cryptocephalus dimidiatipennis* Jacoby 1895

1895 *Cryptocephalus dimidiatipennis* Jacoby, Ann. Soc. ent. Belg. 39: 269.

Material: Taplejung Distr., Kabeli Khola, Yamputhin, 1650–1800 m, cultural land, mixed forest, 3.–4. IX. 83, 1 ex. SMNS. – Kathmandu Distr., Sheopuri Mt., 1700–2100 m, degraded forest, bushes, 25. VI. 88, 2 ex. CLMM. – Sankhua Sabha Distr., between Pahakhola and Karmarang, 2300–1800 m, open forest, bushes, 4. VI. 88, 1 ex. SMNS. – Sankhua Sabha Distr., between Pahakhola and Karmarang, 1800–1500 m, cultural land, bushes, 4. VI. 88, 2 ex. SMNS. – Sankhua Sabha Distr., Arun Valley between Hurure and Chichila, 2000 m, tree-rich cultural land, 17. VI. 88, 1 ex. SMNS.

6.8. *Cryptocephalus darjeelingensis* Jacoby 1908

1908 *Cryptocephalus darjeelingensis* Jacoby, Fauna Brit. India: 263.

Material: Taplejung Distr., upper Tamur valley, rest hut/side valley, 2450 m, broad-leaved forest, bamboo, 19. V. 88, 1 ex. SMNS.

6.9. *Cryptocephalus baroniurbani* Lopatin 1982

1982 *Cryptocephalus baroniurbani* Lopatin, Ent. Basiliensia 7: 414.

Material: Kathmandu Distr., Sheopuri Mt., 1700–2100 m, degraded forest, bushes, 25. VI. 88, 1 ex. SMNS. – Ilam Distr., 5 km N Sanishare, feet of Siwalik Mts., 270–300 m, mixed *Shorea* forest, 3.–5. IV. 88, 1 ex. CLMM. – Taplejung Distr., Yamputhin, ascent to pass Deorali, 2100–2600 m, cultural land, bushes, 16. V. 88, 6 ex. SMNS. – Sankhua Sabha Distr., between Pahakhola and Karmarang, 2300–1800 m, open forest, bushes, 4. VI. 88, 8 ex. SMNS. – Sankhua Sabha Distr., between Pahakhola and Karmarang, 1800–1500 m, cultural land, bushes, 4. VI. 88, 2 ex. CLMM. – Sankhua Sabha Distr., Arun Valley S Mure,

1900–2100 m, tree-rich cultural land, 8. VI. 88, 1 ex. SMNS. — Sankhua Sabha Distr., Arun Valley between Mure and Hurure, 2050–2150 m, 9.–17. VI. 88, 1 ex. SMNS.

6.10. *Cryptocephalus subnepalensis* Lopatin 1982

1982 *Cryptocephalus subnepalensis* Lopatin, Ent. Basiliensia 7: 423.

Material: Kathmandu Distr., Baneshwar, 1400 m, cultural land, gardens, 23.–26. VI. 88, 1 ex. SMNS. — Kathmandu Distr., Sheopuri Mt., 1700–2100 m, degraded forest, bushes, 25. VI. 88, 1 ex. CLMM.

Remarks: Probably this species is only a light colour variation of *C. exsulans* Suffrian 1854, unfortunately both studied specimens are females.

6.11. *Cryptocephalus bhutanicus* Lopatin 1975

1975 *Cryptocephalus bhutanicus* Lopatin, Ent. Basiliensia 1: 368.

Material: Ilam Distr., Mai Pokhari, 2150–2250 m, 23.–25. VIII. 83, 1 ex. SMNS. — Panchthar Distr., upper Mai Majuwa Valley, 2250–2500 m, mixed forest, 27. VIII. 83, 1 ex. CLMM.

Remarks: The species was described from Bhutan, first record for Nepal.

7. Subfamily Eumolpinae

7.1. *Nodina robusta* Jacoby 1892

1892 *Nodina robusta* Jacoby, Ann. Mus. civ. Genova 32: 903.

Material: Modi Khola Valley, Birethanti, 1000 m, 14. VII. 73, 1 ex. SMNS. — Dhading Distr., Buri Gandaki opposite Pangshing, 1600–1800 m, mixed forest, 1. VIII. 83, 1 ex. SMNS. — Gorkha Distr., Buri Gandaki, Nyak to lower Chuling Khola Valley, 2450–2870 m, pastures, *Pinus excelsa* forest, 2. VIII. 83, 1 ex. CLMM.

7.2. *Nodina crassipes* Jacoby 1908

1908 *Nodina crassipes* Jacoby, Fauna Brit. India: 293.

Material: Dhading Distr., Thorpu to Kordunje, 1300–1400 m, 24. VII. 83, 2 ex. SMNS, 1 ex. CLMM.

7.3. *Nodina parvula* Jacoby 1892

1892 *Nodina parvula* Jacoby, Ann. Mus. civ. Genova 32: 902.

Material: Sankhua Sabha Distr., Pahakhola, 2550 m, cultural land, bushes, 30.–31. V. 88, 2 ex. SMNS. — Sankhua Sabha Distr., between Pahakhola and Karmarang, 2300–1800 m, open forest, bushes, 4. VI. 88, 12 ex. SMNS. — Sankhua Sabha Distr., between Pahakhola and Karmarang, 1800–1500 m, cultural land, bushes, 4. VI. 88, 2 ex. SMNS. — Sankhua Sabha Distr., Arun Valley between Num and Mure, 1600–1900 m, tree-rich cultural land, 8. VI. 88, 1 ex. SMNS. — Sankhua Sabha Distr., Arun Valley S Mure, 1900–2100 m, tree-rich cultural land, 8. VI. 88, 1 ex. SMNS. — Sankhua Sabha Distr., Arun Valley between Hurure and Chichila, 2000 m, tree-rich cultural land, 17. VI. 88, 9 ex. SMNS. — Sankhua Sabha Distr., Arun Valley between Mure and Hurure, 2050–2150 m, mixed broad-leaved forest, 9.–17. VI. 88, 1 ex. SMNS. — Sankhua Sabha Distr., Arun Valley, Chichila, 1900–2000 m, *Quercus* forest, bushes near village, 18.–20. VI. 88, 1 ex. SMNS, 4 ex. CLMM.

Remarks: Many of these specimens have more or less darkened legs, but the structure of the aedeagus is identical with the aedeagus of *parvula*, figured by TAKIZAWA (1987).

7.4. *Nodina indica* Jacoby 1895

1895 *Nodina indica* Jacoby, Ann. Soc. ent. Belg. 39: 271.

Material: Ilam Distr., 5 km N Sanishare, feet of Siwalik Mts., 270–300 m, mixed *Shorea* forest, 3.–5. IV. 88, 1 ex. SMNS, 1 ex. CLMM.

7.5. *Nodina dhadinga* n. sp. (fig. 1)

Holotype (♂): Nepal, Dhading Distr., W Samari Banjyang, Topal Khola, 1000–1200 m, 23. VII. 83, leg. MARTENS & SCHAWALLER (SMNS).

Paratypes: Nepal, Ruwakot Distr., forest between Kathmandu and Trisuli, 21. VII. 83, leg. MARTENS & SCHAWALLER, 1 ex. SMNS. — Nepal, Gorkha Distr., Buri Gandaki, Suteo-Labubesi, 700–900 m, *Shorea* mixed forest, 29. VII. 83, leg. MARTENS & SCHAWALLER, 2 ex. SMNS. — Nepal, Gorkha Distr., Darondi Khola under Barpak to Doreni, 900–1100 m, forest remains, 12. VIII. 83, leg. MARTENS & SCHAWALLER, 1 ex. CLMM. — Nepal, Sankhua Sabha Distr., Arun Valley bottom between Hedangna and Num, 950–1000 m, subtropical forest, 6.–8. VI. 88, leg. MARTENS & SCHAWALLER, 1 ex. CLMM.

Diagnosis: Similar to *N. aeneicollis* Jacoby 1895, differs in unicolored upperside and form of aedeagus. Distinguishable from other Indian species by black legs.

Description: Upperside dark green or bronze-green, antennae (except basal fulvous segments), underside and legs black, labrum dark red.

Head with large, moderately dense punctures (about 6–7 in a transverse row on clypeus), without microsculpture, clypeus with shallow rounded emargination. Antennae widened from the 5th segment, 3rd segment shorter than 2nd and 4th. Prothorax convex, with anterior angles strongly deflexed beneath, distinctly punctured throughout; anterior sulcus interrupted in middle. Elytra with regular rows of punctures, distinct to apex and more feeble at sides, humeral row oblique, outermost interspace more or less convex, but ridges absent in both sexes. Propleurae with dense microsculpture, not punctured. First segment of fore tarsus broadened in male. Aedeagus (fig. 1) with rounded apex. Body length of male: 2.4–2.6 mm, body length of female: 2.3–2.6 mm.

7.6. *Nodina martensi* n. sp.

Holotype: Nepal, Gorkha Distr., Buri Gandaki, Nyak, 2270–2450 m, *Pinus excelsa* forest, 1. VIII. 83, leg. MARTENS & SCHAWALLER (SMNS).

Diagnosis: Differs from all Asian species of the genus in very densely punctured elytral interstices.

Description: Bronze metallic, antennae, labrum and legs dark reddish brown.

Body short, rounded ovate. Head shining with distinct sparse punctures (less than 10 in transverse row on frontoclypeus), with oblique grooves above eyes and parallel ridges on clypeus; anterior margin of clypeus arcuate. Antennae widened from the 5th segment, segments 2–4 subequal, preapical segments subglobose, almost as wide as long. Prothorax moderately convex, shining, 1.7 times as broad as long, densely punctured. Elytra with rows of deep punctures, distinct through all its length and confused on lateral margins, lateral ridges absent, all interstices densely punctured, not shagreened. Propleurae shagreened and finely punctured. Body length: 1.6 mm.

7.7. *Basilepta schawalleri* n. sp.

Holotype: Nepal, Sankhua Sabha Distr., Pahakhola, 2550 m, cultured land, bushes, 30.–31. V. 88, leg. MARTENS & SCHAWALLER (SMNS).

Paratypes: Nepal, Sankhua Sabha Distr., above Pahakhola, 2600–2800 m, forest with *Quercus semecarpifolia* and *Rhododendron*, 31. V.–3. VI. 88, leg. MARTENS & SCHAWALLER, 1 ex. SMNS, 1 ex. CLMM.

Diagnosis: Very similar to *B. terminatum* Jacoby 1908 from Manipur, but larger, with toothed femora and different coloration of the elytrae.

Description: Body dark pitchy black, elytrae and legs lighter, dark pitchy brown, apices of elytrae and femora in the middle pale fulvous. Upperside very shining, with feeble metallic gloss.

Head with deep, rather sparse punctures, clypeus not divided from frons, arcuately incised on front margin. Antennal segments 2–4 subequal, apical segments only slightly widened, elongate, about 3 times as long as wide. Prothorax 1.7 times as broad as long, distinctly punctured with depression on each side of the disc, side margin obtusely angulate just behind middle, anterior sulcus broadly interrupted in the middle. Elytra with distinct rows of punctures, which practically disappear behind middle, except very weak sutural row; side margin with feeble curved ridge behind humerus. Proepisternae punctured, but with smooth surfaces near lateral margin and coxa. Femora thickened in the middle, with small acute tooth. First tarsal segment of fore and mid legs feebly widened in male. Body length: 4.2–4.9 mm.

7.8. *Basilepta laeta* n. sp.

Holotype (♂): Nepal, Gorkha Distr., Buri Gandaki, Labubesi-Gorlabesi, 900–1000 m, broad leaved forest, 29. VII. 83, leg. MARTENS & SCHAWALLER (SMNS).

Paratypes: Same locality and date as holotype, 2 ♀♀ SMNS, 1 ♂ CLMM.

Diagnosis: Similar to *B. nigrocinctum* Jacoby 1908 and *B. bipunctatum* Jacoby 1887, differs in the prothorax being angulate near middle, other position of elytral spot and sculpture of upperside.

Description: Body fulvous red, antennae paler, not darkened to apices, underside, suture, a stripe on side margin of elytra and usually a round spot in middle black. Prothorax sometimes with 2 indistinct dark spots.

Head punctured, clypeus not divided from frons, arcuately incised on front margin. Antennal segments 2 and 3 subequal, apical segments cylindrical and elongate. Prothorax 1.6 times as broad as long, distinctly punctured, side margins angulate in middle, anterior sulcus not developed. Elytra with high humeral tubercle and short, feeble humeral costa, basal elevation limited posteriorly by transverse depression, elytral rows distinct, but not deep, weakened posteriorly, interstices feebly punctured. Propleurae shining and punctured. Femora not toothed, tibiae widened to the apex. Body length: 2.8–3.2 mm.

7.9. *Basilepta plagiosum* (Baly 1880)

1880 *Nodostoma plagiosum* Baly, Cist. Ent. 2: 373.

Material: Dhading Distr., from Kagune to Samari Baniyang, 800–1000 m, cultural land, 23. VII. 83, 2 ex. SMNS. – Kathmandu Distr., Sheopuri Mt., 1700–2100 m, degraded forest, bushes, 25. VI. 88, 1 ex. SMNS. – Taplejung Distr., ascent to Khebang from Tada Khola, 1500 m, sacred forest remnant, 25. IV. 88, 8 ex. SMNS. – Taplejung Distr., from Khebang to pass NW Khebang, 1700–2000 m, degraded forest, bushes, 25. IV. 88, 1 ex. SMNS. – Taplejung Distr., Yamputhin, 1650–1800 m, open forest, cultural land, 26. IV.–1. V. 88, 13 ex. SMNS. – Taplejung Distr., lower Gunsa Khola to Lungthung, 1650–1870 m, open forest, bushes, 18. V. 88, 1 ex. SMNS. – Taplejung Distr., upper Tamur Valley, from bamboo bridge

to resthut/side valley, 2200–2400 m, broad-leaved forest, 19. V. 88, 1 ex. SMNS. – Sankhua Sabha Distr., Arun Valley bottom, ascent to Num, 1100–1450 m, broad-leaved forest, 8. VI. 88, 1 ex. SMNS. – Sankhua Sabha Distr., Arun Valley between Num and Mure, 1600–1900 m, tree-rich cultural land, 8. VI. 88, 2 ex. CLMM.

7.10. *Basilepta variabile* (Duvivier 1892)

1892 *Nodostoma variabilis* Duvivier, Ann. Soc. ent. Belg. 36: 406.

Material: Dhading Distr., Thorpu to Kordunje, 1300–1400 m, 24. VII. 83, 2 ex. SMNS. – Gorkha Distr., Arughat to Suteo, 600–700 m, cultural land, 27. VII. 83, 1 ex. SMNS. – Gorkha/Dhading Distr., Buri Gandaki, Jagat to Pangshing, 1300–1650 m, cultural land, 31. VII. 83, 1 ex. SMNS. – Ilam Distr., between Ilam and Parbate, 1250–1450 m, cultural land, bushes, 13. VIII. 83, 1 ex. SMNS. – Kathmandu Distr., Sheopuri Mt., 1700–2100 m, degraded forest, bushes, 25. VI. 88, 3 ex. SMNS. – Taplejung Distr., Yamputhin, 1650–1800 m, 26. IV.–1. V. 88, 1 ex. SMNS. – Taplejung Distr., SE Yamputhin to Yamputhin, 1650–2000 m, cultural land, bushes, 26.–30. IV. 88, 1 ex. SMNS. – Taplejung Distr., Tamur Valley, Hellok, 2000 m, forest remnant, 17. V. 88, 1 ex. – Taplejung Distr., between Hellok and lower Gunsu Khola, 1620–2000 m, tree-rich cultural land, 18. V. 88, 1 ex. SMNS, 8 ex. CLMM. – Taplejung Distr., lower Gunsu Khola to Lungthung, 1650–1870 m, open forest, bushes, 18. V. 88, 14 ex. SMNS. – Sankhua Sabha Distr., between Pahakhola and Karmarang, 2300–1800 m, open forest, bushes, 4. VI. 88, 8 ex. SMNS. – Sankhua Sabha Distr., between Pahakhola and Karmarang, 1800–1500 m, cultural land, bushes, 4. VI. 88, 4 ex. SMNS. – Sankhua Sabha Distr., between Karmarang and Hedangna, 950–1350 m, tree-rich cultural land, 5. VI. 88, 1 ex. SMNS. – Sankhua Sabha Distr., Arun Valley between Hurure and Chichila, 2000 m, tree-rich cultural land, 17. VI. 88, 2 ex. SMNS. – Sankhua Sabha Distr., Arun Valley, Chichila, 1900–2000 m, *Quercus* forest, bushes near village, 18.–20. VI. 88, 5 ex. SMNS. – Sankhua Sabha Distr., Arun Valley, between Chichila and Bhotebas, 2000–1850 m, cultural land, 20. VI. 88, 1 ex. SMNS. – Sankhua Sabha Distr., Arun Valley, between Bhotebas and Darapangma, 1800–1400 m, cultural land, 20. VI. 88, 1 ex. SMNS.

Remarks: The species is very variable in coloration, the material represents 4 main colour forms: upperside fulvous – upperside fulvus, elytra with black, longitudinal stripes along suture – prothorax fulvous, elytra dark – upperside dark.

7.11. *Basilepta semistriatum* (Jacoby 1906)

1906 *Nodostoma semistriatum* Jacoby, Fauna Brit. India: 326.

Material: Dhading Distr., Ankhu Khola Valley, Ankhu Sangu, 650 m, cultural land, 24.–25. VII. 83, 2 ex. SMNS. – Gorkha Distr., Arughat to Suteo, 600–700 m, cultural land, 27. VII. 83, 1 ex. SMNS. – Ghorka Distr., Darondi Khola under Barpak to Doreni, 900–1100 m, forest remains, 12. VIII. 83, 1 ex. CLMM.

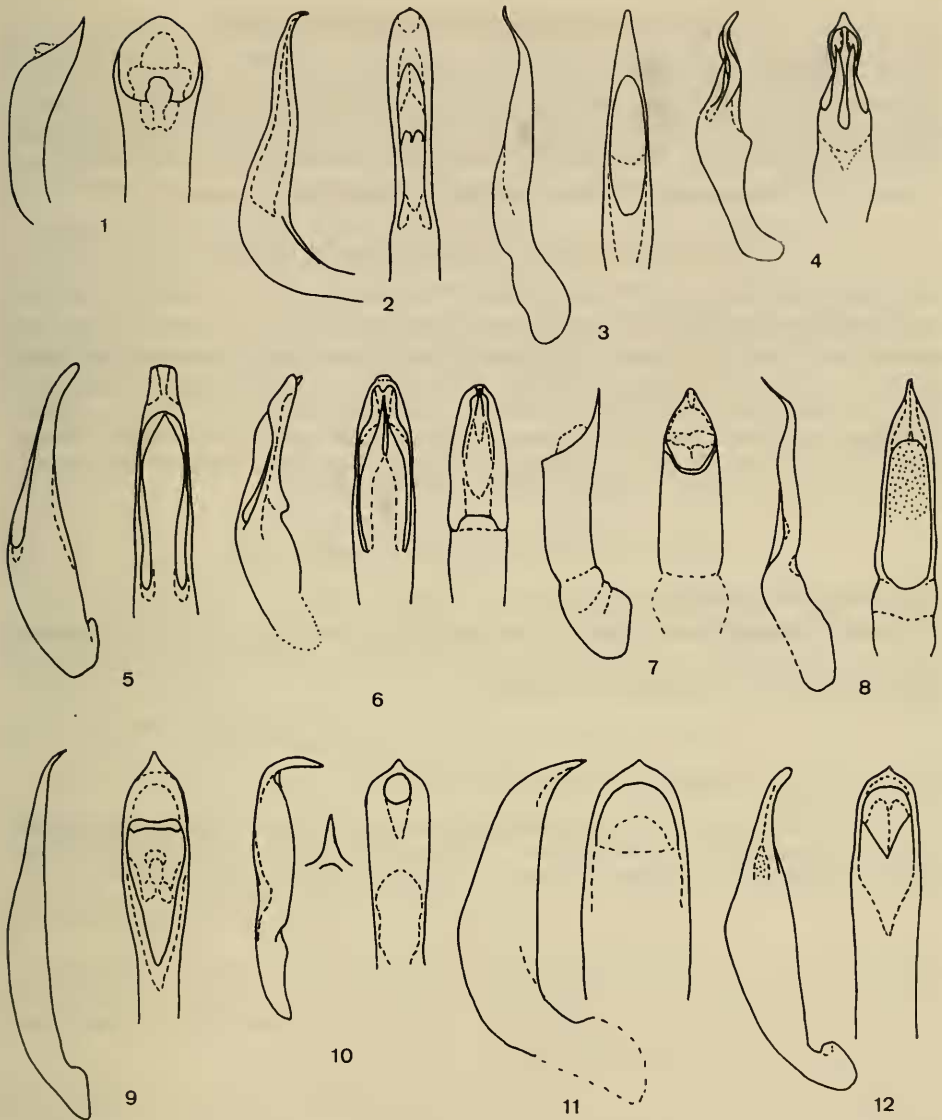
Remarks: This species was described from Burma, herewith registered for Nepal for the first time.

7.12. *Basilepta binhanum* (Pic 1930)

1930 *Nodostoma binhanum* Pic, Mel. exot. Ent. 56: 8.

Material: Kathmandu Distr., Sheopuri Mt., 1700–2100 m, degraded forest, bushes, 25. VI. 88, 1 ex. SMNS.

Remarks: *B. kumatai* Kimoto & Takizawa 1973, described from Nepal, is a new synonym of *B. binhanum* Pic.



Figs. 1-12. Aedeagus, lateral and dorsal view. - 1. *Nodina dhadinga* n. sp., - 2. *Apophyllia schawalleri* n. sp., - 3. *Cneorane minuta* n. sp., - 4. *Calomicrus brunneus* n. sp., - 5. *Monolepta simlense*, - 6. *Monolepta himalayensis*, - 7. *Mimastra fortipunctata*, - 8. *Mimastra scutellata*, - 9. *Arthrotidea nepalensis*, - 10. *Paridea perplexa*, - 11. *Leptarthra fasciata*, - 12. *Sphenoraia rutilans*.

7.13. *Chrysonopa rotundicollis* (Jacoby 1900)

1900 *Nodostoma rotundicollis* Jacoby, Mem. Soc. ent. Belg. 7: 104.

Material: Sankhua Sabha Distr., between Pahakhola and Karmarang, 2300-1800 m, open forest, bushes, 4. VI. 88, 1 ex. SMNS.

Remarks: First record from Nepal, the species was described from Assam.

7.14. *Chrysonopa longipes* (Jacoby 1894)

1894 *Dermorhytis longipes* Jacoby, Novit. Zool. 1: 275.

Material: Taplejung Distr., confluence of Kabeli and Tada-Khola, 1000 m, mixed broad-leaved forest, 23.–25. IV. 88, 5 ex. SMNS, 2 ex. CLMM. — Sankhua Sabha Distr., between Pahakhola and Karmarang, 1800–1500 m, cultural land, bushes, 4. VI. 88, 2 ex. SMNS.

Remarks: First record for Nepal, formerly known from Burma.

7.15. *Colasposoma semicostatum* Jacoby 1908

1908 *Colasposoma semicostatum* Jacoby, Fauna Brit. India: 443.

Material: Taplejung Distr., ascent to Khebang from Tada Khola, 1500 m, sacred forest remnant, 25. IV. 88, 1 ex. SMNS. — Taplejung Distr., lower Gunsu Khola to Lungthung, 1650–1870 m, open forest, bushes, 18. V. 88, 1 ex. CLMM. — Sankhua Sabha Distr., Arun Valley between Hurure and Chichila, 2000 m, tree-rich cultural land, 17. VI. 88, 2 ex. SMNS. — Sankhua Sabha Distr., Arun Valley between Chichila and Bhotebas, 2000–1850 m, *Quercus* forest, 20. VI. 88, 1 ex. CLMM. — Sankhua Sabha Distr., Arun Valley between Bhotebas and Darapangma, 1800–1400 m, cultural land, 20. VI. 88, 3 ex. SMNS.

7.16. *Colasposoma laticolle* Jacoby 1900

1900 *Colasposoma laticolle* Jacoby, Mem. Soc. ent. Belg. 7: 115.

Material: Dhading Distr., W Samari Banjyang, Topal Khola, 1000–1200 m, cultural land, 23. VII. 83, 1 ex. SMNS. — Kathmandu Distr., Sheopuri Mt., 1700–2100 m, degraded forest, bushes, 25. VI. 88, 2 ex. SMNS, 1 ex. CLMM.

7.17. *Cleorina nepalensis* Takizawa 1980

1980 *Cleorina nepalensis* Takizawa, Ent. Rev. Japan 9: 97.

Material: Taplejung Distr., from Sablako Pass to Limbudin, 1600–1300 m, tree-rich cultural land, bushes, 22. IV. 88, 1 ex. SMNS. — Taplejung Distr., lower Gunsu Khola to Lungthung, 1650–1870 m, open forest, bushes, 18. V. 88, 3 ex. SMNS, 1 ex. CLMM.

7.18. *Lypesthes indica* Jacoby 1908

1908 *Lypesthes indica* Jacoby, Fauna Brit. India: 412.

Material: Dhading Distr., Ankhu Khola Valley, Ankhu Sangu, 650 m, cultural land, 24.–25. VII. 83, 1 ex. SMNS, 1 ex. CLMM.

Remarks: First record for Nepal, known from India.

7.19. *Xanthonia nepalensis* Takizawa 1987

1987 *Xanthonia nepalensis* Takizawa, Proc. Jap. Soc. syst. Zool. 35: 52.

Material: Kathmandu Distr., Sheopuri Mt., 2100–2300 m, *Quercus semecarpifolia* forest, 25. VI. 88, 1 ex. SMNS. — Sankhua Sabha Distr., between Pahakhola and Karmarang, 2300–1800 m, open forest, bushes, 4. VI. 88, 1 ex. SMNS. — Sankhua Sabha Distr., Arun Valley between Mure and Hurure, 2050–2150 m, mixed broad-leaved forest, 9.–17. VI. 88, 2 ex. SMNS, 1 ex. CLMM.

7.20. *Trichotheca sikhimensis* Takizawa 1987

1987 *Trichotheca sikhimensis* Takizawa, Proc. Jap. Soc. syst. Zool. 35: 53.

Material: Gorkha Distr., Chuling Khola, Djongshi Kharka, 3050–3400 m, mixed forest, 5. VIII. 1983, 1 ex. SMNS. — Gorkha Distr., Chuling Khola, Meme Kharka, 3300–3400 m,

forest, morene, 5.–6. VIII. 83, 1 ex. SMNS. – Gorkha Distr., Chuling Khola, S Kalo Pokhari, 3600 m, *Betula* forest, morene, 7. VIII. 83, 1 ex. CLMM. – Ilam Distr., 5 km N Sanishare, feet of Siwalik Mts., 270–300 m, mixed *Shorea* forest, 3.–5. IV. 88, 1 ex. CLMM. – Taplejung Distr., Lasse Dhara Ridge and Lassetham pasture, 3000–3300 m, forest with *Abies* and *Rhododendron*, 6.–7. IX. 83, 1 ex. CLMM. – Taplejung Distr., Simbua Khola, Yalung, ascent to Anda Deorali, 3500–3700 m, 9. IX. 83, 1 ex. SMNS. – Taplejung Distr., Gunsa, 3100–3400 m, *Abies/Larix/Rhododendron* forest, 11.–12. IX. 83, 7 ex. SMNS.

Remarks: These populations from Nepal vary in size, coloration of upperside and differently developed tooth on fore femora, but are quite identical in the structure of the aedeagus. Possibly, *sikhimensis* Takizawa 1987 is a synonym of *variabilis* Gressitt & Kimoto 1961, described from Tibet. Nearly all Nepalese records originate from subalpine forests above 3000 m, only a single sample comes from low altitude (Ilam Distr.); probably this specimen is a labelling error.

8. Subfamily Chrysomelinae

8.1. *Semenovia nagaja* Daccordi 1982

1982 *Semenovia nagaja* Daccordi, Ent. Basiliensia 7: 397.

Material: Sankhua Sabha Distr., descent from Pomri La, south slope, 4400–4100 m, pastures, 29. V. 88, 1 ex. SMNS. – Taplejung Distr., Anda Deorali between Simbua and Gunsa Khola, 4490 m, alpine meadows, 9. IX. 83, 1 ex. CLMM.

Remarks: This alpine species was described from Pakistan and is for the first time registered for Nepal.

8.2. *Phaedon besucheti* Daccordi 1984

1984 *Phaedon besucheti* Daccordi, Rev. suisse Zool. 91: 323.

Material: Panchthar Distr., Dhorpar Kharka, 2700 m, mature *Rhododendron/Lithocarpus* forest, 13.–16. IV. 88, 2 ex. SMNS, 1 ex. CLMM. – Ilam Distr., Ghitang Khola, 2550 m, *Lithocarpus*, 28.–31. III. 80, 1 ex. SMNS.

Remarks: The species was described from Darjeeling, now for the first time recorded for Nepal near to the border to Darjeeling.

8.3. *Agasta formosa* Hope 1840

1840 *Agasta formosa* Hope, Col. Man. 33: 177.

Material: Taplejung Distr. Yamputhin, 1650–1800 m, cultural land, open forest, 26. IV.–1. V. 88, 1 ex. SMNS.

Remarks: This species is widely distributed in the Himalayas and in south-eastern Asia, but was hitherto not recorded for Nepal.

8.4. *Phrathora vitellinae* (Linnaeus 1758)

1758 *Chrysomela vitellinae* Linnaeus, Syst. nat. 10: 370.

Material: Taplejung Distr., Yamputhin, 1650–1800 m, cultural land, open forest, 26. IV.–1. V. 88, 1 ex. SMNS.

Remarks: This widely distributed transpalaearctic species is for the first time recorded for Nepal and the Oriental region in general. The structure of the male aedeagus is quite identical with that in European populations.

9. Subfamily Galerucinae

9.1. *Pseudadimonia variolosa* (Hope 1831)

1831 *Colaspis variolosa* Hope in GRAY, Zool. Misc.: 30.

Material: Sankhua Sabha Distr., Arun Valley bottom between Hedangna and Num, 950–1000 m, subtropical forest, 6.–8. VI. 88, 2 ex. SMNS.

9.2. *Apophylia schawalleri* n. sp. (fig. 2)

Holotype (♂): Nepal, Taplejung Distr., Tamur Khola, Chirua, 1200 m, 14. IX. 83, leg. MARTENS & DAAMS (SMNS).

Paratypes: Nepal, Dhading Distr., Buri Gandaki, opposite Pangshing to bridge below Nyak, 1600–1800 m, mixed open forest, 1. VIII. 83, leg. MARTENS & SCHAWALLER, 1 ex. SMNS. — Nepal, Sankhua Sabha Distr., between Pahakhola and Karmarang, 2300–1800 m, open forest, bushes, 4. VI. 88, leg. MARTENS & SCHAWALLER, 1 ex. SMNS. — Nepal, Sankhua Sabha Distr., between Pahakhola and Karmarang, 1800–1500 m, cultural land, bushes, 4. VI. 88, leg. MARTENS & SCHAWALLER, 3 ex. SMNS, 2 ex. CLMM.

Diagnosis: Similar to *A. nilakrishna* Maulik 1936, differs immediately in the structure of the antennae and abdominal brushes of the males.

Description: Body black, elytra metallic green, basal segments of antennae and tibiae more or less pitchy brown.

Vertex very densely punctured, frontal tubercles shining, subquadrate. Antennae simple in both sexes, segment 2 only a little longer than broad, segments 3–8 subequal, elongate, about 5 times as long as broad, apical segments shorter, about 3 times as long as broad. Prothorax 1.7 times as broad as long, finely and densely punctured, with 4 depressions: basally, near anterior margin and laterally. Elytra extremely densely punctured, practically granulose, with white pubescence. Venter with two brushes on hind margin of the first segment. Aedeagus see fig. 2. Body length: 5.1–5.8 mm.

9.3. *Galerucella placida* Baly 1878

1878 *Galerucella placida* Baly, Cist. Ent. 2: 381.

Material: Gorkha/Dhading Distr., Buri Gandaki, Jagat to opposite Pangshing, 1300–1650 m, cultural land, 31. VII. 83, 11 ex. SMNS.

9.4. *Periclitena vigorsi* (Hope 1831)

1831 *Galeruca vigorsi* Hope in GRAY, Zool. Misc.: 29.

Material: Gorkha Distr., Buri Gandaki, Suteo to Labubesi, 700–900 m, *Shorea* forest, 29. VII. 83, 1 ex. SMNS.

9.5. *Agetocera mirabilis* (Hope 1831)

1831 *Aegelocerus mirabilis* Hope in GRAY, Zool. Misc.: 29.

Material: Sankhua Sabha Distr., Arun Valley between Mure and Hurure, 2050–2150 m, mixed broad-leaved forest, 9.–17. VI. 88, 2 ex. SMNS.

9.6. *Meristata trifasciata* (Hope 1831)

1831 *Galeruca trifasciata* Hope in GRAY, Zool. Misc.: 28.

Material: Sankhua Sabha Distr., above Pahakhola, 2600–2800 m, forest with *Quercus semecarpifolia* and *Rhododendron*, 31. V.–3. VI. 88, 1 ex. SMNS.